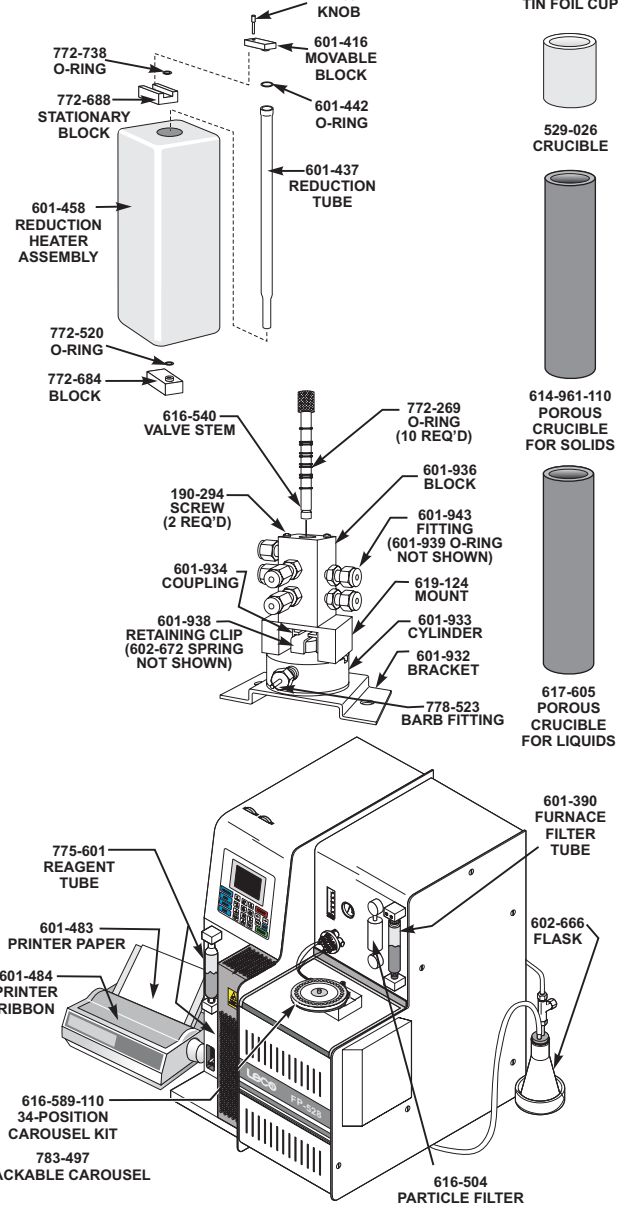
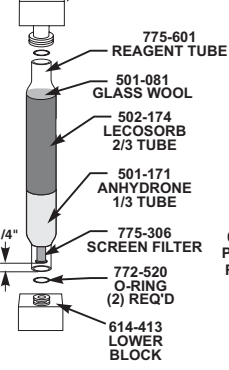
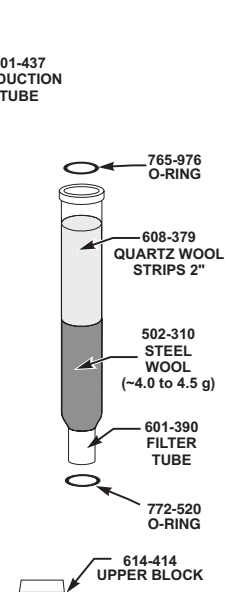
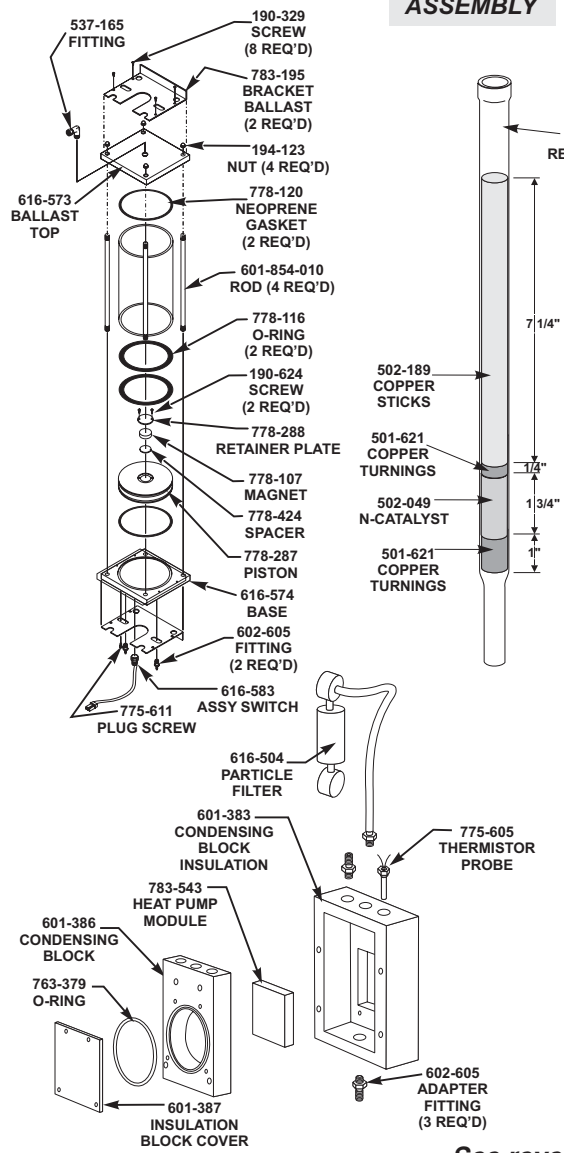
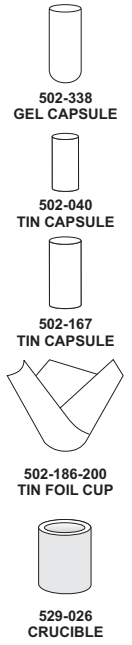
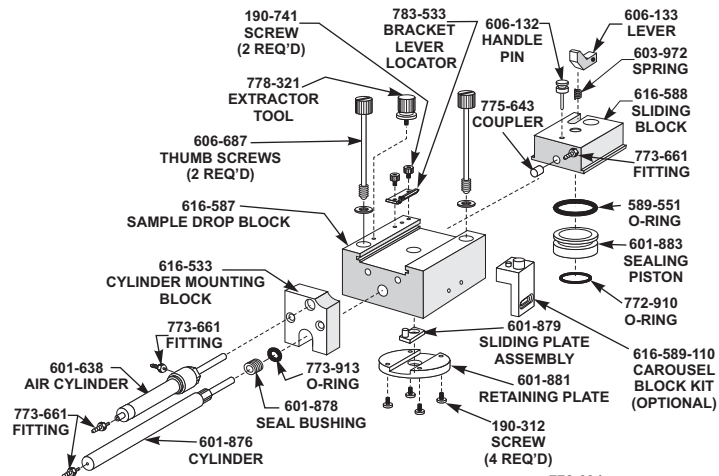
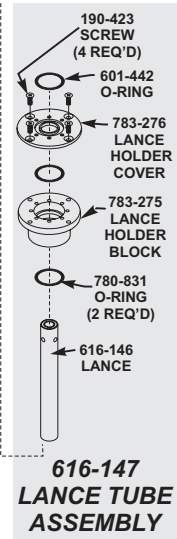
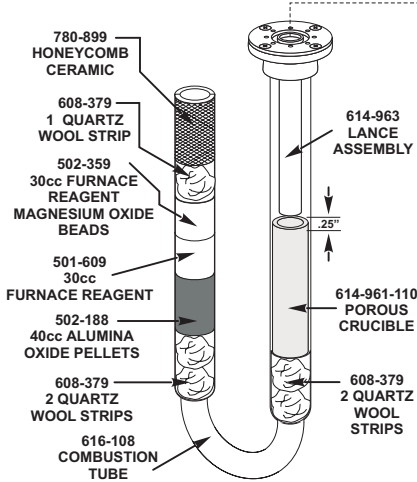


Note: Part numbers and standards' values may change. Consult LECO for the latest information.



See reverse side for contact information

GENERAL COMBUSTION SUPPLIES

502-188	Alumina Oxide Pellets 200 g bottle
501-171	Anhydrone 454 g (1 lb.) bottle
502-189	Copper Sticks 100 g ampule
502-304	Copper Sticks 100 g bottle
502-304-500	Copper Sticks 500 g bottle
501-621	Copper Turnings 200 g bottle
501-609	Furnace Reagent (Calcium Oxide/Kaolin)
501-081	Glass Wool 454 g (1 lb.) box
763-265	Glass Wool 227 g (0.5 lb.) package
501-077	Iron Chip 908 g (2 lb.) bottle
502-174	Lecosorb 500 g bottle
502-359	Magnesium Oxide Beads 200 g
502-049	N-Catalyst 50 g bottle
608-379	Quartz Wool Strips 10/pkg
502-310	Steel Wool 454 g (1 lb.)

CAPSULES AND CRUCIBLES

502-338	Gel Capsule, Small 400/pkg
502-382	Gel Capsule, Medium 400/pkg
614-961-110	Porous Crucibles for Solids 10/pkg
617-605	Porous Crucibles for Liquids 10/pkg
501-059	Tin Capsules 100/bottle
502-040	Tin Capsules 100/bottle
502-040-100	Tin Capsules 1000/bottle
502-167	Tin Capsules, Large 100/bottle
502-186-200	Tin Foil Cups, Small 100/bottle
502-186-100	Tin Foil Cups, Small 1000/bottle

OPERATION ACCESSORIES

502-005	Brush	604-492	Quick Sampler Kit
601-981	Wire Brush	609-170-110	Quik-Cap Kit
616-152	Crucible Extractor Tool	604-398	Sample Cup Holder, Large
603-350	Tool O-ring Installation	604-373	Sample Cup Holder, Small
762-515	Tool O-ring Removal	601-490-110	Sample Foiler Kit
775-306	Secondary Filter, 10 micron	778-405	10-Sample Storage Block
775-307	Filter Tool, Thumbscrew	501-241	Vacuum Grease
502-023	Funnel Quick Disc	501-614	Spatula
502-213	Leak Detection Solution	502-007	Tube Cleaner
601-470-110	Liquid Injector Kit, Manual	502-028	Tweezers
616-504	Particle Filter	604-378	Tweezers, Curved
616-199	5K Consumable Pkg. (Tin Foil Caps)	619-380	Vacuum Cleaner Attachment Assembly
617-016	5K Consumable Pkg. (Quik-Caps)		

COMBUSTION TUBES AND GLASSWARE

601-390	Glass Filter Tube (wide mouth top, small bottom) requires one (1) 765-976 Top O-ring and one (1) 772-520 Bottom O-ring for sealing
771-030	Glass Filter Tube (small mouth top and bottom) requires 772-520 O-rings for sealing
775-601	Reagent Tube, requires 772-520 O-rings for sealing
601-437	Reduction Tube, requires 601-442 O-rings for sealing
780-899	Honeycomb Ceramic Stop
616-108	Combustion Tube
616-147	Lance Assembly, includes 616-146 Lance, two 780-831 O-rings, 783-275 Lance Holder Block, 783-276 Lance Holder Cover
614-960	Lance Upgrade Kit, includes 614-963 Lance Tube Assembly, 614-961-110 Porous Crucibles, 614-960-901 Instruction Bulletin

SET-UP STANDARDS**SOY FLOUR (250 grams)**

Part No.	% C	% H	% N	% S
501-561	—	—	8.0–10.0	—

CORN FLOUR (250 grams)

Part No.	% C	% H	% N	% S
501-563	—	—	0.8–1.6	—

ORCHARD LEAVES (20 grams)

Part No.	% C	% H	% N	% S
502-055	44.0–52.0	5.7–6.5	2.0–2.8	0.15–0.25

SOIL (65 grams)

Part No.	% C	% H	% N	% S
502-062	0.75–1.25	*	*	*
502-308	2.50–3.50	—	*	*
502-309	10.0–14.0	—	*	*

TOBACCO LEAVES (20 grams)

Part No.	% C	% H	% N	% S
502-082	35.0–47.0	4.0–7.0	2.0–4.0	0.3–0.8

EDTA (50 grams)

Part No.	% C	% H	% N	% S
502-092	40.80–41.20	5.46–5.54	9.52–9.60	—

EDTA (250 grams)

Part No.	% C	% H	% N	% S
502-092-250	40.80–41.20	5.46–5.54	9.52–9.60	—

GLYCINE (50 grams)

Part No.	% C	% H	% N	% S
502-211	32.00	6.67	18.66	—

CORN GLUTEN (50 grams)

Part No.	% C	% H	% N	% S
502-272	51.0–53.0	7.0–7.5	11.0–12.0	0.75–1.0

ALFALFA (50 grams)

Part No.	% C	% H	% N	% S
502-273	45.0–47.0	5.5–6.5	2.5–5.0	0.25–0.35

WHEAT FLOUR (50 grams)

Part No.	% C	% H	% N	% S
502-274	44.0–46.0	6.0–7.0	2.5–3.5	0.15–0.25

RYE FLOUR (50 grams)

Part No.	% C	% H	% N	% S
502-275	43.5–45.5	6.0–7.0	1.5–2.5	0.10–0.20

OAT MEAL (50 grams)

Part No.	% C	% H	% N	% S
502-276	45.0–47.0	6.0–7.0	2.5–3.5	0.15–0.25

BARLEY (50 grams)

Part No.	% C	% H	% N	% S
502-277	45.0–47.0	6.0–7.0	1.0–3.0	0.10–0.20

RICE FLOUR (50 grams)

Part No.	% C	% H	% N	% S
502-278	43.0–45.0	6.0–7.0	1.0–3.0	0.10–0.20

SUCROSE (50 grams)

Part No.	% C	% H	% N	% S
501-441	42.10	6.48	—	—

*Values vary—contact LECO for current levels.

NOTE: Part numbers and standards' values may change. Consult LECO for latest information.

United States:

Ph: 1-800-292-6141

Fax: 269-982-8977

Canada:

Ph: 1-800-268-0215

Fax: 905-564-6582

represented by:

Other Countries:

Ph: 269-983-5531

Fax: 269-983-3850